
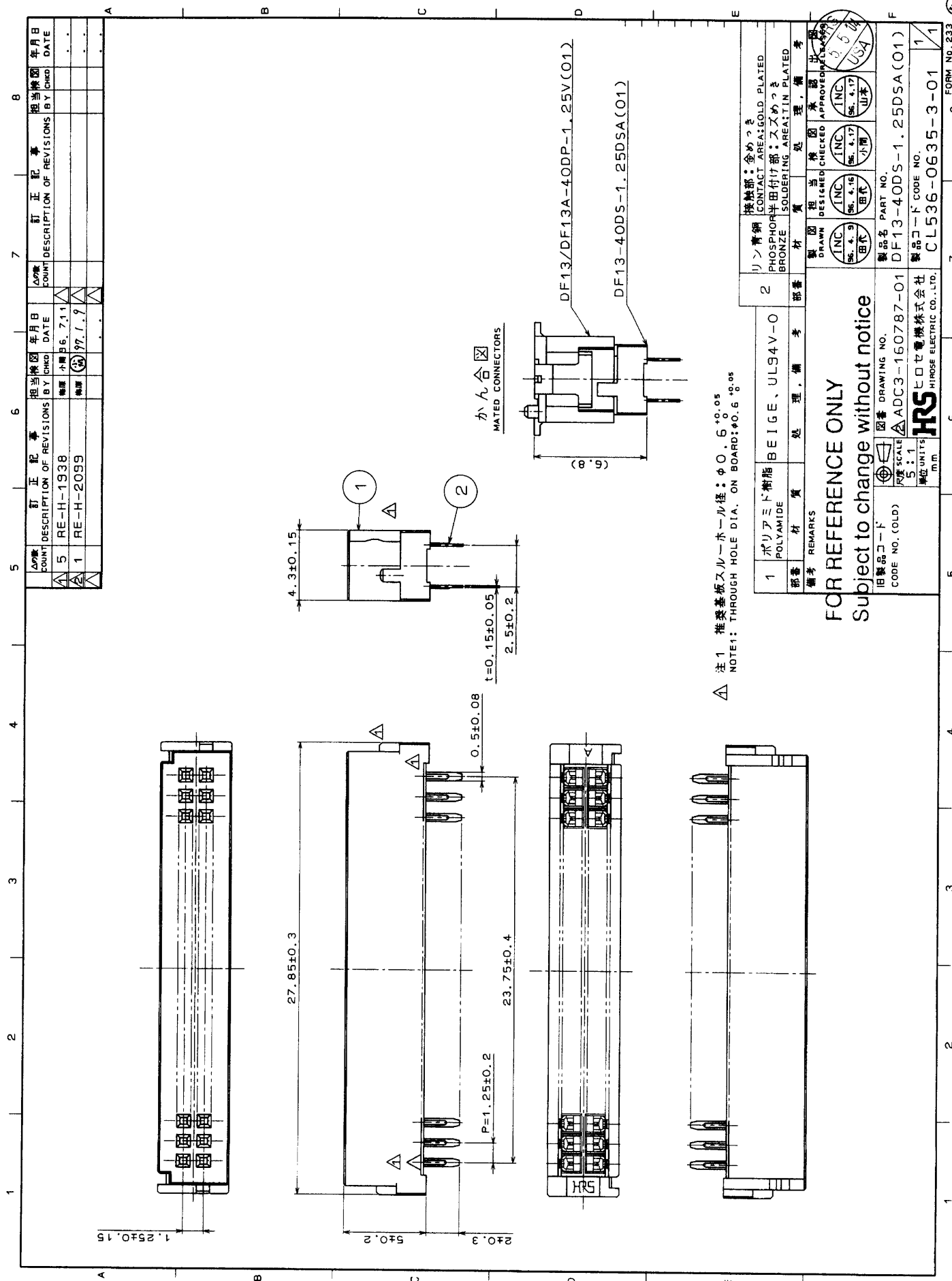


COUNT	DESCRIPTION OF REVISIONS	BY	CHKD	DATE	COUNT	DESCRIPTION OF REVISIONS	BY	CHKD	DATE
△					△				
△					△				
APPLICABLE STANDARD									
RATING	OPERATING TEMPERATURE RANGE	-35 °C TO +85 °C(NOTE1)			STORAGE TEMPERATURE RANGE	-10 °C TO +60 °C			
	VOLTAGE	150 V AC			APPLICABLE CONTACT	-			
	CURRENT	1 A			APPLICABLE CONNECTOR	DF13/13A-40DP-1. 25V(01)			
					APPLICABLE CABLE	-			
SPECIFICATIONS									
ITEM		TEST METHOD			REQUIREMENTS			QT	AT
CONSTRUCTION									
GENERAL EXAMINATION		VISUALLY AND BY MEASURING INSTRUMENT.			ACCORDING TO DRAWING.			○	○
MARKING		CONFIRMED VISUALLY.						○	○
ELECTRICAL CHARACTERISTICS									
CONTACT RESISTANCE		100 mA (DC OR 1000 Hz).			30 mΩ MAX.			○	-
CONTACT RESISTANCE MILLIVOLT LEVEL METHOD		20 mV MAX, mA(DC OR 1000 Hz).						-	-
INSULATION RESISTANCE		100 V DC.			500 MΩ MIN.			○	-
VOLTAGE PROOF		500 V AC FOR 1 min.			NO FLASHOVER OR BREAKDOWN.			○	-
MECHANICAL CHARACTERISTICS									
CONTACT INSERTION AND EXTRACTION FORCES		BY STEEL GAUGE.			INSERTION FORCE N MAX. EXTRACTION FORCE N MIN.			-	-
INSERTION AND WITHDRAWAL FORCES		MEASURED BY APPLICABLE CONNECTOR.			INSERTION FORCE N MAX. EXTRACTION FORCE N MIN.			-	-
MECHANICAL OPERATION		50 TIMES INSERTIONS AND EXTRACTION.			① CONTACT RESISTANCE: 30 mΩ MAX. ② NO DAMAGE, CRACK OR LOOSENESS OF PARTS.			○	-
VIBRATION		FREQUENCY 10 TO 55 Hz, SINGLE AMPLITUDE 0.75 mm, - m/s ² AT 2 h, UNDER 10 CYCLES.			① NO ELECTRICAL DISCONTINUITY OF 1 μs.			○	-
SHOCK		490 m/s ² DURATION OF PULSE 11 ms AT 3 TIMES FOR 3 DIRECTIONS.			② CONTACT RESISTANCE: 30 mΩ MAX. ③ NO DAMAGE, CRACK OR LOOSENESS OF PARTS.			○	-
ENVIRONMENTAL CHARACTERISTICS									
RAPID CHANGE OF TEMPERATURE		TEMPERATURE -55 → 15~35 → +85 → 15~35 °C TIME 30 → 2~3 → 30 → 2~3 min UNDER 5 CYCLES.			① CONTACT RESISTANCE: 30 mΩ MAX. ② INSULATION RESISTANCE: 500 MΩ MIN. ③ NO DAMAGE, CRACK OR LOOSENESS OF PARTS.			○	-
DAMP HEAT (STEADY STATE)		EXPOSED AT 40 ± 2 °C, 90 ~ 95 %, 96 h.						○	-
CORROSION, SALT MIST		EXPOSED IN 5 % SALT WATER SPRAY FOR 48 h.			① CONTACT RESISTANCE: - mΩ MAX. ② NO HEAVY CORROSION.			○	-
HYDROGEN SULPHIDE		EXPOSED IN PPM FOR h. (TEST STANDARD: JEIDA-38)			① CONTACT RESISTANCE: mΩ MAX. ② NO HEAVY CORROSION.			-	-
SULPHUR DIOXIDE		EXPOSED IN 10 PPM FOR 96 h. (TEST STANDARD: JEIDA-39)			① CONTACT RESISTANCE: - mΩ MAX. ② NO HEAVY CORROSION.			○	-
RESISTANCE TO SOLDERING HEAT		SOLDER TEMPERATURE, 260 ± 5 °C FOR IMMERSION, DURATION, 5 s.			NO DEFORMATION OF CASE OF EXCESSIVE LOOSENESS OF THE TERMINALS.			○	-
SOLDERABILITY		SOLDERED AT SOLDER TEMPERATURE, 230 ± 10 °C FOR IMMERSION DURATION, 3 s.			SOLDER SHALL COVER A MINIMUM OF 95 % OF THE SURFACE BEING IMMERSED.			○	-
REMARKS									
NOTE 1: INCLUDE THE TEMPERATURE RISING BY CURRENT.					DRAWN	DESIGNED	CHECKED	APPROVED	RELEASED
FOR REFERENCE ONLY					<i>S. Tashiro</i>	<i>S. Tashiro</i>	<i>J. Ono</i>	<i>H. Yamamoto</i>	
Subject to change without notice Unless otherwise specified, refer to MIL-STD-1344.					'96.4.24	'96.4.24	'96.4.24	'96.4.24	
Note QT:Qualification Test AT:Assurance Test ○:Applicable Test									
HRS HIROSE ELECTRIC CO., LTD.				SPECIFICATION SHEET			PART NO. DF13-40DS-1. 25DSA(01)		
CODE NO.(OLD) CL		DRAWING NO. ELC4-160787-01			PART NO. CL 536 - 0635 - 3 - 01			1/1	

TO





かん合 ☑
MATED CONNECTORS

△ 注1 推奨基板スルーホール径: φ 0.5^{+0.05}
NOTE1: THROUGH HOLE DIA. ON BOARD: φ 0.5^{+0.05}

Δ訂数 COUNT	訂正記号 DESCRIPTION OF REVISIONS	年月日 DATE	訂正記号 DESCRIPTION OF REVISIONS	年月日 DATE	訂正記号 DESCRIPTION OF REVISIONS	年月日 DATE
5	RE-H-1938	小間 86.7.13				
1	RE-H-2099	小間 97.1.9				

部番 PART NO.	材質 MATERIAL	処理 FINISH	備考 REMARKS
1	ポリアミド樹脂 POLYAMIDE	BEIGE, UL94V-0	
2	リン青銅 PHOSPHOR BRONZE	金めっき AREA: GOLD PLATED	

製図 DRAWN	検閲 DESIGNED	承認 CHECKED	承認 APPROVED	承認 APPROVED	承認 APPROVED
田代 小間	田代 小間	田代 小間	田代 小間	田代 小間	田代 小間

部品名 PART NO.	部品コード PART CODE NO.
DF13-40DS-1.25DSA(O1)	CL536-0635-3-01

FOR REFERENCE ONLY
Subject to change without notice

旧製品コード
CODE NO. (OLD)
5.4.1
図書
DRAWING NO.
ADC3-160787-01
単位
UNIT'S
mm
HRS HIROSE ELECTRIC CO., LTD.

TO

